

A vending machine with complete control of its consumable products (both the financial and qualitative aspects).

Compact and simple it is designed for use with an existent hot and / or cold water source. It is intended for small companies or administrative offices.

No adjustment is needed. Diviniris automatically detects the cartridge and all the necessary parameters for its distribution. The name of each product that is installed scrolls along the display panel.

The quality of the drinks is completely guaranteed. This is due to a double protection. With two pre-programmed dates in each cartridge, best before date and once opened date. Each cartridge has a recommended life of 4 month once opened; this is to ensure maximum quality. If this date or the best before date is expired the Diviniris will automatically refuse service of the product. This is indicated by an orange light.

Visual indication

The green light on its own indicates that the product is available.

The green light with the orange light = cartridge nearly empty.

The orange light on its own means cartridge is empty and needs replacing.

The information concerning the prices, drinks, the credit left on card, the state of cartridges and the machine are all displayed in “real-time” on the front of the machine.

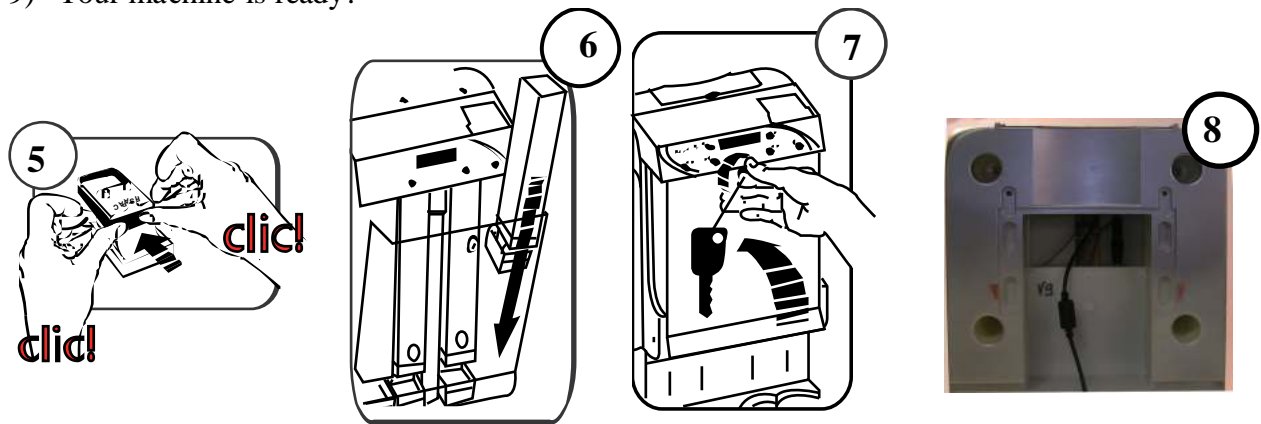
Audio indication

When the door is open a beep will indicate that Diviniris is unavailable.

A) INSTALLATION



- 1) Remove keys from the “spoon and sugar compartment”.
- 2) Fix drip tray in place.
- 3) Open door.
- 4) **Ensure that the product guides are correctly installed.**
- 5) **Ensure that the cartridge is ready for use by clicking dossier into place. Click both sides in place.**
- 6) **Place cartridges on door (NEVER install directly into machine).**
- 7) Close the door and the cartridges fit in to place automatically.
- 8) First connect cable to back of Diviniris and then plug into mains.
- 9) Your machine is ready.



*Never place the power supply on floor (due to risk of flooding).

B) DRINKS SELECTION

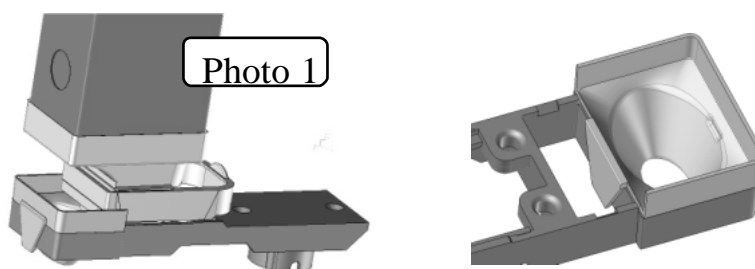
- Place the cup* under the desired drink.
- Push the button corresponding to the desired drink.
- The price of drink will be displayed.
- Insert coins or card.
- Your drink is served.
- Fill cup with water.

*As standard we recommend our drinks to be used with 15 cl cups.

C) MAINTENANCE

There is no technical maintenance needed for this apparatus.

Only the drip tray and the product guides need to be cleaned regularly. The product guides are clipped in place (see photo 1).



D) CARD RECHARGING

To recharge the cards for payment follow the simple procedure below.

- 1) Place « **Recharging Card** », supplied with the machine, onto the top of Diviniris.
- 2) Press NO the message « Request cancelled » is displayed.
- 3) The message « Recharge card OK to valid and NO to cancel » is displayed.
- 4) Press **OK** and remove « **Recharging Card** ».
- 5) The message « Awaiting card » is displayed.
- 6) Place the user card to be recharge on Diviniris.
- 7) The display indicates « card verified » and « CARD UPDATED » then the machine requests « Another Card ».
- 8) At this moment, your card is accredited.
- 10) Simply choose NO or OK to stop or recharge other user cards.
- 11) After 15 seconds your machine is ready for use again.

E) MACHINE CONFIGURATION

The standard configuration of Diviniris is the following:

Payment by card (with multiple prices, corresponding to the different drinks).

To modify this configuration follow the procedure below:

- 1) Place « **Configuration Card** », supplied with the machine, onto the top of Diviniris.
- 2) Press NO the message « Request cancelled » is displayed.
- 3) The message « Configuration machine OK or NO » is displayed.
- 4) Press OK.
- 5) The message « Configuration UPDATE » is displayed and the buttons OK and NO light up.
- 6) Press NO or any of the 4 buttons.
- 7) After 15 seconds your machine is ready for use again.

F) SCREEN DISPLAY MESSAGES

The following information is indicated by scrolling along the display.

<u>MESSAGE</u>	<u>DESCRIPTION</u>
INSTALL CART	: Install a Cartridge.
OPENING EXPIRED	: Cartridge opened for more than 4 months.
DATE EXPIRED	: Best before date of the product exceeded.
FAULTY CARTRIDGE	: Defective cartridge.
CHANGE CARTRIDGE	: Maximum number of drinks reached. Replace the cartridge.
DRINKS PRICE	: The price of the product is displayed when selecting.
CREDIT EXCEEDED	: Badge user empty. Recharge card.
CARD ERROR	: Remove card and replacement it in opposite direction, if message reappears then please contact us.
OUT OF SERVICE	: Please contact us.

G) SIMPLES MALFUNCTIONS

The cartridges are difficult to install.	Cartridge or product installed incorrectly See the point 4, 5 and 6 of the subheading INSTALLTION.
The door has difficulty closing.	
The distribution work but the product does not fall into cup.	
The cartridge is not recognised after installation (2 orange light on).	Try another placement.
Card for payment is indicated as faulty	Try it in the other side
Other electronic malfunction	Switch the machine off and on.

H) TECHNICAL CHARACTERISTICS

Power supply:	19 V DC (12-20 V admissible).
Weight:	3,680 kgs.
Dimensions (H x L x P) :	52 mm x 26 mm x 20 mm.

I) FIXING TO A WALL OR A WATER COOLER

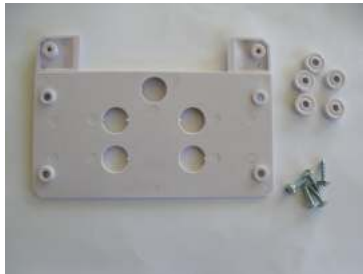


PHOTO 1



PHOTO 2



WATERCOOLER FISAPAC

A) INSTALLING THE MOUNTING PALTE

- 1) Remove the 5 plastic washers from the plate (photo 1)
- 2) Drill the 4 fixing holes on the support (diameter 3.5 mm)
- 3) Fix the mounting plate with 4 screws (not provided) with each of plastic washes placed in-between the support and the mounting plate (photo 2)

PS : For Fisapac water coolers replace point 1 with : Remove by pushing upwards the 4 elements of the water cooler and place the plate directly on to, and in the same axes as the machine (photo 3).

B) INSTLLING DIVINIRIS ONTO MOUNTING PLATES

- 1) Connect the power supply plug to back of Diviniris.
- 2) Thread the cable down the designated placement on back of diviniris.
- 3) Break the pre-cut plastic to allow the cable to exit behind diviniris.
- 4) Open Diviniris's door and place Diviniris onto the MOUNTING PLATE.
- 5) Attach Diviniris by the interior with two screws Torx 4x50 mm delivered with machine.

PS : For Fisapac water coolers add to point 4 : Diviniris must be completely flush with mounting plate also ensure that the 4 pins are correctly lodged into there appropriate slots.

MATERIEL DISTRIBUTED BY

FISAPAC ZA ESCUDIER 19270 DONZENAC FRANCE

Reception +33 555 856 211 Technical Service 0 820 025 492 Fax +33 555 857 460

www.fisapac.com

contact@fisapac.com



UK : It is forbidden to dispose of the electric and electronic components with non-sorted municipal waste. The latter can have potential effects on the environment and human health of share the presence of dangerous substances in the electric and electronic components.

Recycling must be carried out via the systems of collection placed at the disposal for this use.